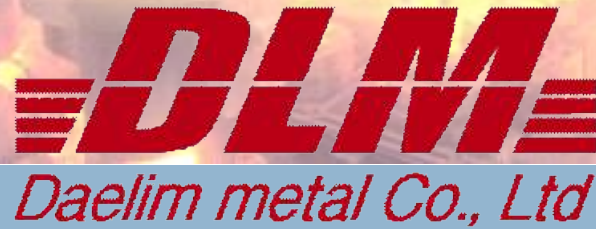




- Inconell
- Duplex
- Hastelloy
- Monel
- Nikel Alloy
- Stainless Steel
- Heat-resistant Steel
- C-Mn Steel

COMPANY'S PROFILES



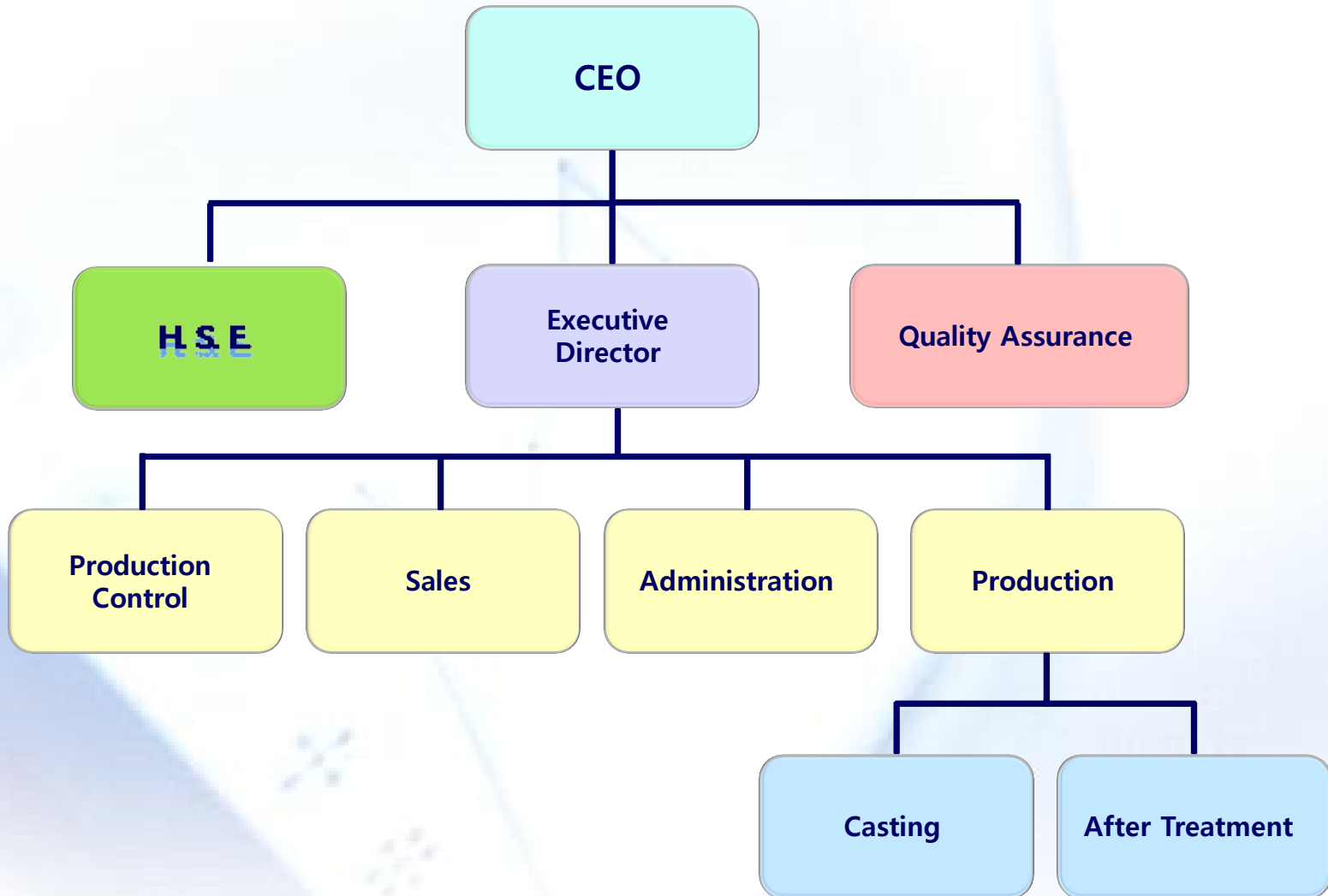
Contents

- 1 History of Company 3
- 2 Organization 4
- 3 Manufacturing Process 5
- 4 Manufacturing Facilities 6
- 5 Inspection & Test Equipment 7
- 6 Main Customer & Product 8
- 7 Capacity / Steel Grade 9
- 8 Certificates 10

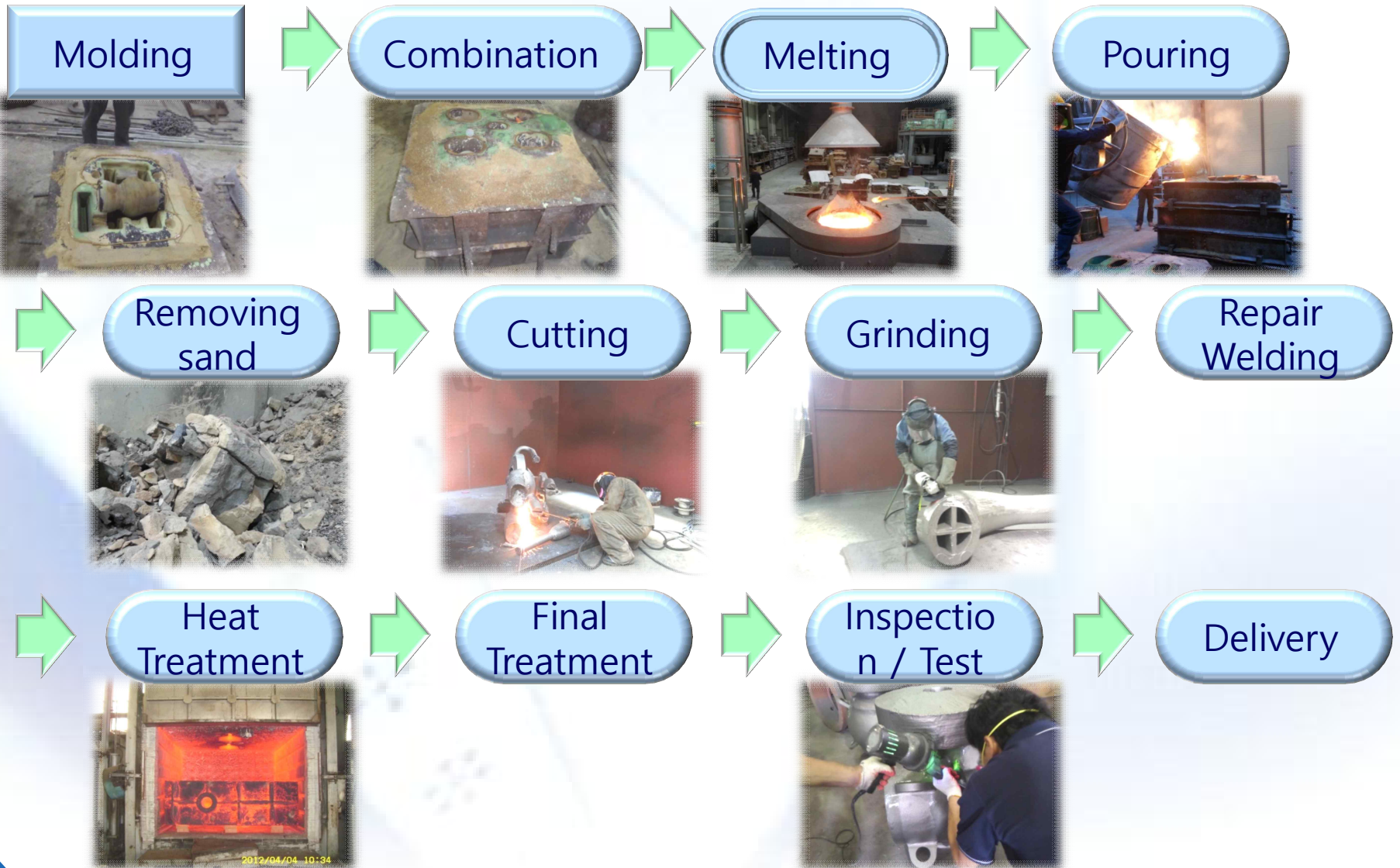
1. History of Company

◆ Name	Daelim Metal Co., Ltd.
◆ Address	#5, Garisae 3-ro, Gangseo-gu, Busan, Republic of Korea (46727)
◆ TEL	+82-(0)51-971-5900 , FAX : +82-(0)51-971-5252
◆ Established	01. Jul. 1995.
◆ Relocated	01. Jul. 2016.
◆ Product	Steel Castings for Valve,, industrial part , etc.
◆ Employed	Total 36 persons
◆ Capital	800 million (2015 – Korean Money)
◆ Site	Area 3,527.00M2, Floor space 3,787.42M2
◆ Certified	ISO 9001, ISO 14001
◆ Registered	at Korea Gas Safety Corporation.
◆ Class Society	(ABS, DNV/GL, KR, LR, NK, RINA,BV)

2. Organization



3. Manufacturing Process



4. Manufacturing Facilities

NO	Name	Dimension / Size	Q'ty	Remarks
1	High Frequency Induction Furnace	3.5ton/1ton , 3.5ton	2 set	Korea Inductotherm
2	Heat Treatment Furnace	3m * 3.5m * 2m(H) / 960°C	1	Hyundai H/T Furnace
3	Hanger Shot Blaster	3.5m * 3.5m * 4m(H)	1	Chungsong
4	Sand Mixer	Continuous type (CAP' = 7~10 TON/HR)	1	Chungsong
		Sand Miller 1500Ø	2	
5	Overhead Crane	Max.15 ton (1) ~min. 2.8 ton	11	Hankook Crane
6	Air Compressor	100HP	2	Hanshin Comp.
7	Ladle (S)	0.5Ton(2), 1Ton(1), 1.5Ton(1), 2Ton(1)	4	
8	Ladle (L)	3Ton(1), 5Ton(1), 7Ton(1)	3	
9	Flask	Max 3200mm*2600mm~Min 700mm*600mm	360	
10	RT ROOM (Bunker)	7.4m * 6.6m * 4m(H) Co-60 / Ir-192	1	

5. Inspection & Test Equipments

NO	Name	Spec.	Q'ty	Remarks
1	Spectrometer	GNR – 3 Base 23CH	1	
2	Universal Test Machine	SHIMADZU – 100Ton	1	
3	Charpy Impact Tester	ORIENTAL– 30Kgf/m	1	
4	Rockwell Hardness Tester	OMAG s.a.s.	1	
5	Portable Hardness Tester	TIME – HB30 ~ 650	1	
6	Microscope	OLYMPUS	1	
7	Ultrasonic Tester	KRAUTKRAMER (USK-7S)	1	
8	Ultrasonic Thickness Gauge	Picosonic	1	
9	Yoke for MPI	KDE	1	
10	Black Light Lamp	NAWOO TECH LTD.	2	
11	Thermometer	MYEONG JIN	2	
12	Infrared Termometer	SATO (-30~1550°C)	1	

6. Main Customer & Product

No.	Customer	Product Detail	Material
1	K.P.C	Ball Valve, etc	WCB / CN3MN / A890 5A
2	S&W Industry Co.,Ltd	Gate Valve, etc.	A890-6A
3	S&S VALVE Co., Ltd.	Ball Valve, etc.	CF3M / CF8M
4	Samwoo KJS Tech	Gate Valve, etc.	A890-6A / CN3MN / CF8M
5	HJ Valve,	Gate Valve, etc.	CF8C / LCB
6	D.K.C Co.,Ltd	Butterfly Valve, etc.	A890-1B, 4A, 5A / LCC
7	Ace-V Co.,Ltd	Butterfly Valve, etc.	A890-4A, 5A / CF3M
8	Sejin Valve,	Butterfly Valve, etc.	A890-5A / WCB
9	KPC	Globe Valve, etc.	CF3M
10	Hankook Valve,	Gate Valve, etc.	CF8C / WCB
11	Sungkwang Bend	Pipe Mandrel, etc.	SCH13 / SCH17 / SCH22
12	S.R.V	Gate Valve, etc.	A494 M35-1 (Monel)
13	Key Valve, Tech	Gate Valve, etc.	WCB / WC9 / C12A
14	H.L.C	Gate Valve, etc.	C12A
15	Sung Do Valve	Butterfly Valve, etc.	WCB / CF8 / CA15
16	Weir International Corporation	Globe Valve, etc.	CA15 / WC9

7. Capacity / Steel Grades

Capa. Per Month	300 ton
Max Weight	7 ton / ea

No.	Material	GRADE
1	ASME / ASTM (S)A216	WCB, WCC
2	ASME / ASTM (S)A217	WC6, WC9, C5, C12, C12A, CA15
3	ASME / ASTM (S)A351	CF3M, CF3, CF8, CF8M, CF8C
4	ASME / ASTM (S)A352	LCB, LCC
5	ASME / ASTM (S)A890	1B, 4A, 5A, 6A
6	ASME / ASTM (S)A494	CU5MCuC, CW2M, CW6M, CW6MC, CX2M, CW2MW

8. Certificates



8. Certificates (Class Society)

ABS



DNVGL



KR



BV



LR



NK



RINA



Views



view



Pouring



Melting furnace



Moulding



Welding



Pattern Store



Shot Blast



H/T Furnace



RT Room



Thank You!

Daelim Metal Co., Ltd.

